



“

I was particularly drawn to Proofpoint Meta's Zero Trust approach because it provided us with the means to create micro-segmentations to granularly define exactly which internal resources would be permitted to which users. The Meta Connect web feature was also one of the main considerations that won us over.

Anthony Mathieu – Desktop Support Technician  
City of Norwalk, Connecticut

Norwalk is city in Fairfield County in southwestern Connecticut, on the northern shore of Long Island Sound. Norwalk lies within both the New York metropolitan area as well as the Bridgeport metropolitan area. Approximately 89,000 people live in Norwalk, and the city currently employs around 750 people.

## Challenges

The City of Norwalk faced multiple challenges with supporting its remote workforce, while ensuring citizens received high quality and effective services. Some of the challenges included the ability to manage its legacy Cisco VPN solution due to scalability, security and compatibility. In order to access on-prem datacenter applications and third-party applications, users relied primarily on the city's legacy VPN solution, which offered an unstable user experience and increased the attack surface.



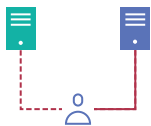
### Management

Remote employees and contractors needed to access the municipal datacenter. The main challenge was implementing workarounds to all users and providing cross-platform support, especially for Windows 10 and subsequent updates.



### Security

As cities across the United States have become more targeted by threat actors, the City of Norwalk faced many challenges with third-party vendor connections to the city's network. Broad access and lack of visibility on lateral movement across the environment prevented the security team from implementing granular micro-segmentation with zero-trust security concepts. In addition, the city relied on a legacy VPN solution which was no longer supported by the vendor and putting the security of the environment at risk.

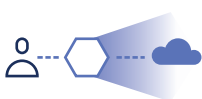


### End-User Experience

City employees and contractors faced many challenges accessing applications due to bad performance and software incompatibility across platforms. This negatively affected employee productivity.

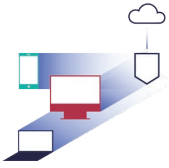
## The Proofpoint Meta Solution

Proofpoint Meta offers a scalable cloud-native global backbone, high-performance connectivity at any time from any location, so that city employees and contractors can connect to the environment in a seamless manner.



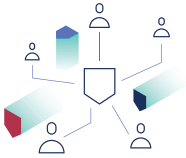
### Easy deployment

Proofpoint Meta was easy to deploy by loading a lightweight MetaPort virtual machine and running the onboarding command. The city's IT team was able to easily set micro-segmentation policies and provide secure connectivity to users and applications its dual datacenter infrastructure.



### Simplified Management

Instead of spending time on firewall configurations, Proofpoint Meta provided the City of Norwalk with seamless virtual micro-segmentation of the datacenter for granular identity-based access.



### Enhanced Security

Instead of tedious configuring of firewalls, Meta provides seamless virtual microsegmentation of the data center and cloud LAN/Vnet for granular identity-based access to internal resources. The Meta Connect web feature also made it easy to connect with no need to install an agent, allowing users to view only the resources they need.

## About Meta Networks

Meta Networks, a Proofpoint company, is reinventing the enterprise network for the cloud. With Meta NaaS, you can rapidly connect people, applications, clouds and sites, and secure them with a software-defined perimeter. Leveraging a cloud-native global backbone, Meta NaaS delivers the high-performance, anytime/anywhere connectivity that employees expect, along with the security you need.